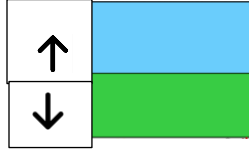


#1 PURPLE BELT

You can cut on the lines and you will have flashcards!

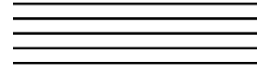
1

What is **PITCH**?



2

What do you call the place where you write the music (the five lines/four spaces)?



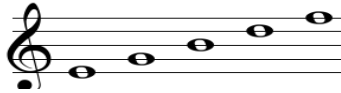
3

What is this symbol?



4

Are these notes on lines or spaces?



5

Are these notes on lines or spaces?



6

Where is the “doghouse” D on the keyboard?



7

What is a **MELODY**?



8

What are **DYNAMICS**?



9

What is **TEMPO**?



10

What is **BEAT**?



11

What is a **GENRE**?



12

What is **TIMBRE**?



13

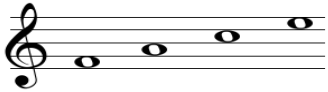
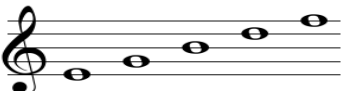

What is a **COMPOSER**?



14

What is a **CONDUCTOR**?



| | | |
|--|---|---|
| <p>2</p> <p>Music Staff <i>(Baa daa daa daa boom There's five lines on the . . .)</i></p> | <p>1</p> <p>The highs and the lows of the music.</p> | |
| <p>5</p> <p>Spaces</p>  | <p>4</p> <p>Lines</p>  | <p>3</p> <p>Treble Clef or G Clef <i>(I knew you were ___ when you walked in.)</i></p> |
| <p>8</p> <p>It's volume. <i>(Loud or soft?)</i></p> | <p>7</p> <p>Tune or the sequence of pitches. <i>(Diddle lee die dee dee the tune's the melody.)</i></p> | <p>6</p> <p>It is between the group of two black keys.</p>  <p>D</p> |
| <p>11</p> <p>A distinct type or style of music. <i>(Opera, Rock, Country etc.)</i></p> | <p>10</p> <p>The pulse of the music. <i>(Boom, boom, boom!)</i></p> | <p>9</p> <p>The speed of the beat! <i>(Fast or slow?)</i></p> |
| <p>14</p> <p>Director, leader, teacher</p> | <p>13</p> <p>Writer</p> | <p>12</p> <p>Instrument's own special sound or voice. <i>(Boom – I hit the gong and you know it is a gong because of it's timbre.)</i></p> |

Your child has his/her first test in music on the date listed below. This sheet is a study guide for the test. If you cut the cards on the lines, you will end up with flashcards.

Test Date: _____

Teacher's Name: _____