

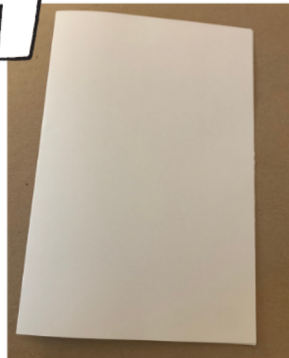
MY MONSTER'S FRIDGE



Materials: 9x12 White Sulphite Paper, Pencil, Fine Tip Sharpie, Colored Pencils or Markers, Ultra Fine Tip Sharpie.

STEPS

1



Fold a piece of 9x12in paper in half like a card.

2



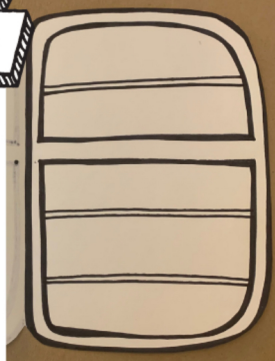
Draw a simple fridge ALONG THE FOLD of the paper.

3



Cut out the fridge. Do not cut the fold. It should open like a card.

4



Open the fridge and draw in the shelves.

5



Using the drawing guide, add your monster's favorite foods/drinks/snacks. You can trace your foods with an Ultra Fine Point Sharpie.

6



Add lots of color! You can use markers, colored pencils, or crayons.

7



BONUS: Add extra details on the outside and inside of your monster's fridge! Bugs, rust, webs, and slime are just a few examples!

EMPTY CONTAINERS

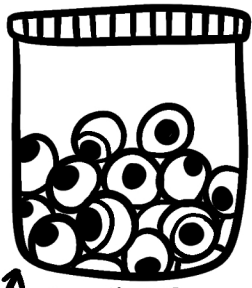
Get creative!
Try different
shapes & sizes



WHAT FUNNY
SNACK & TREATS
WOULD YOU PUT
IN THESE?

FOOD PACKAGING





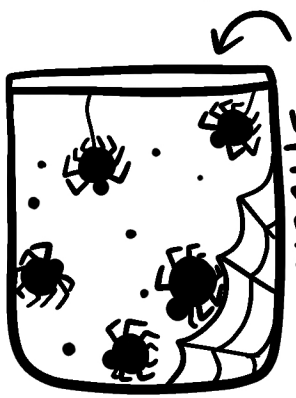
BOWL OF EYEBALLS



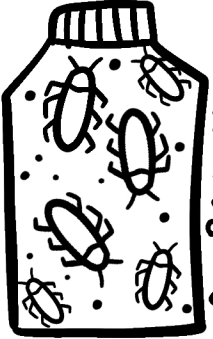
OLD CAKE



BAG OF FLIES



JUICY SPIDERS



ROACH CRUNCHIES



FLOATING SPAGHETTI MEATBALLS



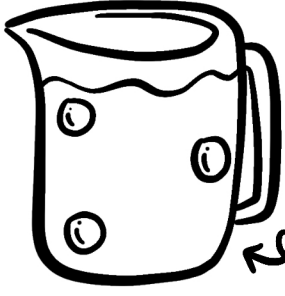
MILK



CHIPS



MONSTER POP



LEM-BOO-NADE

IDEAS



SPICY WORMS

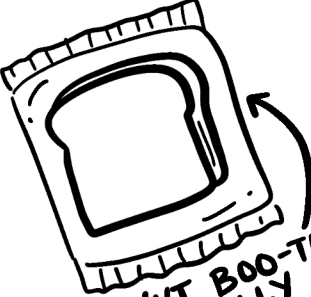


SALTY TOADS
MOLDY PASTA

FROZEN MEALS



CANDY



PEANUT BOO-TER AND JELLY



GHOST POPS



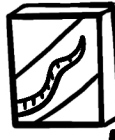
CANNED ANTS



GRUB SOUP



BEETLE COOKIES



ROASTED RAT TAILS



EAR WAX ICE CREAM



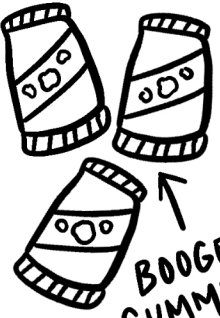
BABY SLOBBER



MONSTER KING



DIET MONSTER DEW



BOOGER GUMMIES!