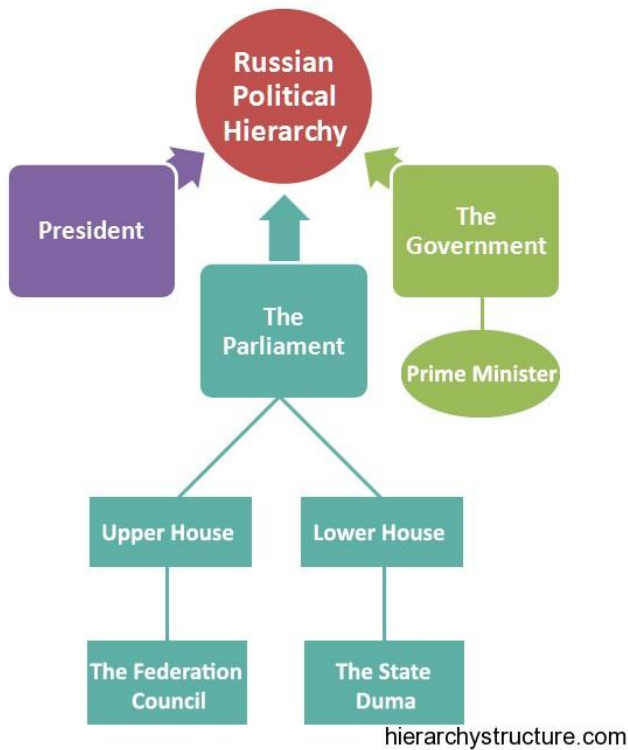


# RUSSIA'S GOVERNMENT STRUCTURE

Federation



Russia is considered a Federation. Its system is loosely based on the American structure. However, unlike the US, which starts with a Constitution of merit that succeeds, or even Nigeria, which starts with a Constitution of merit but fails, Russia's undemocratic actions are legitimized through its Constitution. For example, there are three branches, but the executive predominates. The President can dissolve the Duma (part of the legislative branch) if they 3 times refuse to confirm his nominee for Prime Minister.

There is strong state (government) control over major corporations, including censorship of the media.

A corporatist economic philosophy prevails.

