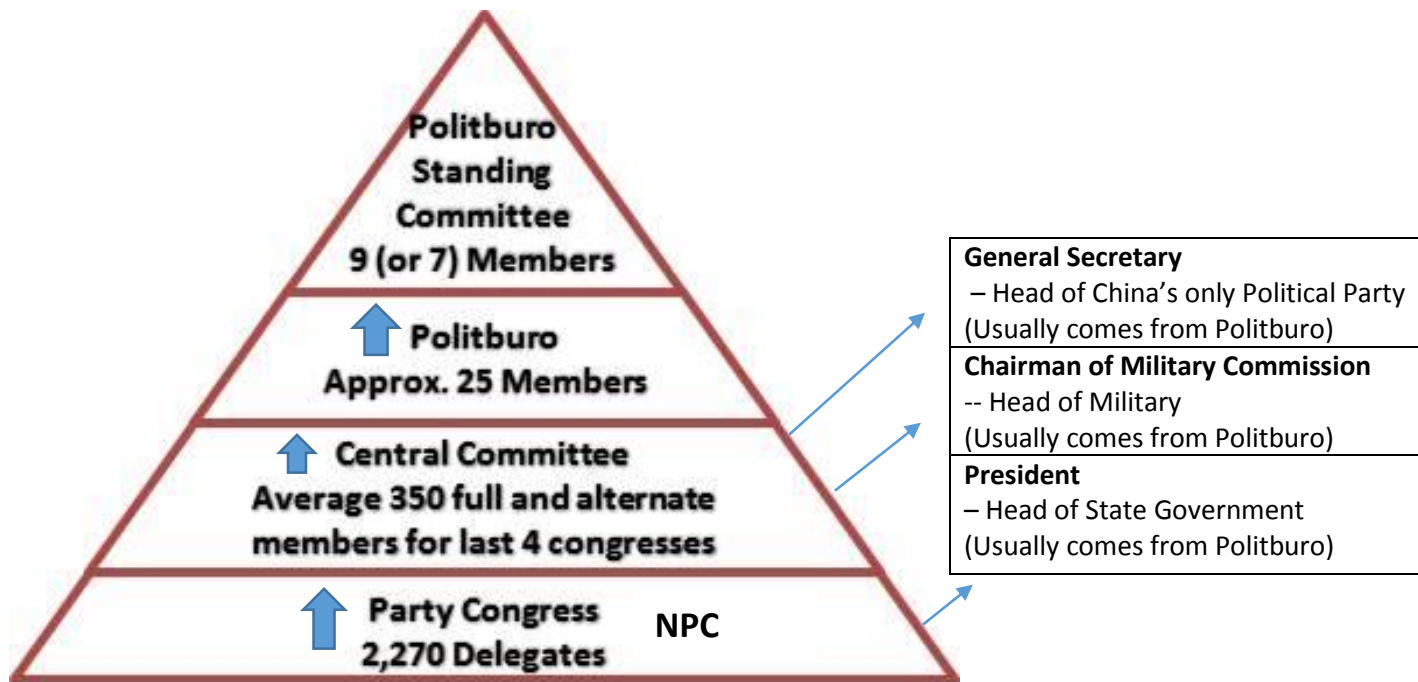


CHINA'S GOVERNMENT STRUCTURE

Communist



In order to get promoted in China's government, individuals need to cater to the levels above them. The members of the Party Congress (National People's Congress) come from a hierarchy of assemblies that are elected at the local levels. China operates under a unicameral system, and the vast majority of the NPC are loyal members of the Communist Party.

The most recent de facto leaders of China have held all three positions listed above, with the General Secretary and Chairman of the Military having substantial authority; however, the President has no true influence and acts in the capacity of a manager. The current leader of China is Xi Jinping. If China was an NFL team, the General Secretary would be the owner, and China's President might be the Head Coach. The Chairman of the Military would be Commissioner, Roger Goodell.