

YELLOW FORM

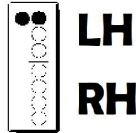
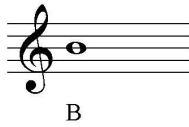
New Notes: B, A, G

Play the following exercises on new note B.

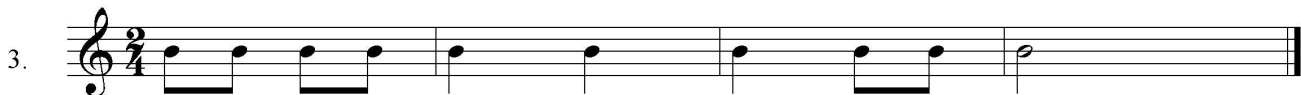
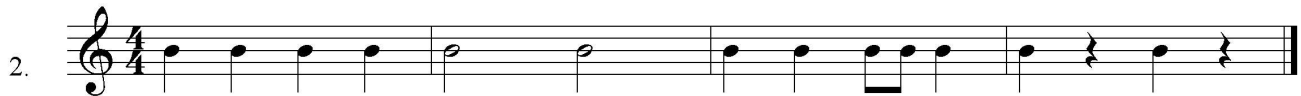
Remember to clap the rhythm first.

Written Work:

Circle all of the rests in each exercise for the Yellow Form.



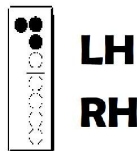
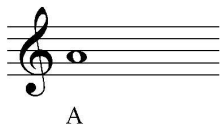
We Begin with B!



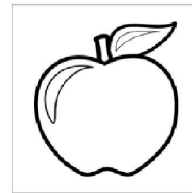
The 2 numbers at the beginning of a song are called the TIME SIGNATURE.

Play the following exercises on new note A.

Remember to clap the rhythm first.



We add a finger for A.

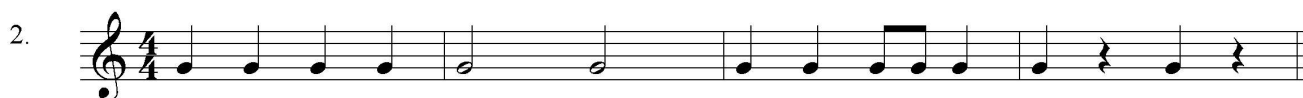


Play the following exercises on new note G.
Remember to clap the rhythm first.



LH
RH

G is our 3rd note AND it covers 3 holes on top.



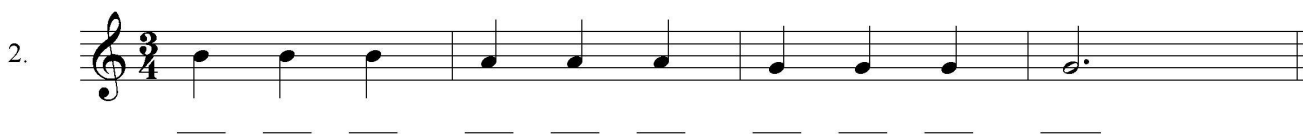
Now let's try G, A and B together!

Practice Steps:

1. How many beats per measure?
2. Clap the rhythm.
3. Finger the notes and SAY the note names.
4. Play as written

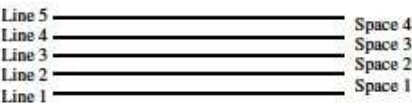
Written Work:

Write the letter name below each note.



Lesson 1: The Staff

The musical **staff** is made up of five **lines** and four **spaces**.



1. Practice drawing a staff by connecting the hyphens.

- -
- -
- -
- -
- -

2. On this staff, number the lines from low to high.

3. On this staff, number the spaces from low to high.

4. Draw a note on each line of the staff below.

5. Draw a note on each space of the staff below.

