

PURPLE FORM

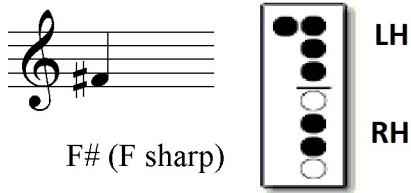
Test Piece: *Aura Lee*

Remember to clap the rhythm first.

Circle all of the rests in each exercise for the Purple Form.

Rules for sharps: The sharp sign lasts for the whole measure. The barline cancels the sharp sign. Be careful!

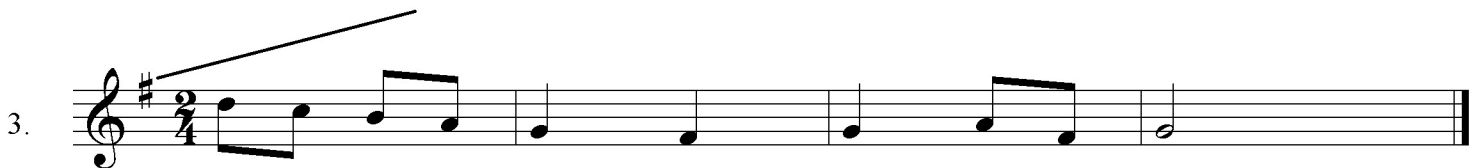
Rules for sharps: The sharp sign lasts for the whole measure. The barline cancels the sharp sign. Be careful!



For F# make the note G with the LEFT HAND and welcome "Fido, the doggie" to your RIGHT HAND! Your pointer and pinky fingers are his "ears!"

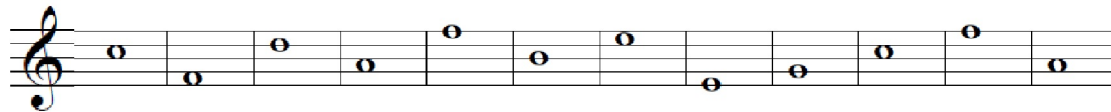


This is called the **KEY SIGNATURE**.

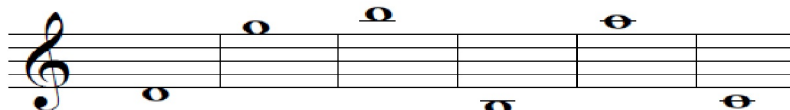


Please indicate the following notes on the indicated space.





❖ Challenge! Please indicate the following notes that lie outside of the staff.



You are now ready to try the Purple Test! Good luck!

Aura Lee

American Folk Song



Congratulations! You have passed your Purple Stripe!

Music Teacher Signature

Date