

GRAY FORM

New Notes: Bb

Test Piece: When Love is Kind

Play the following exercises on new note Bb.

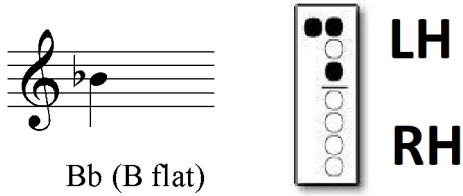
Remember to clap the rhythm first.

Written Work:

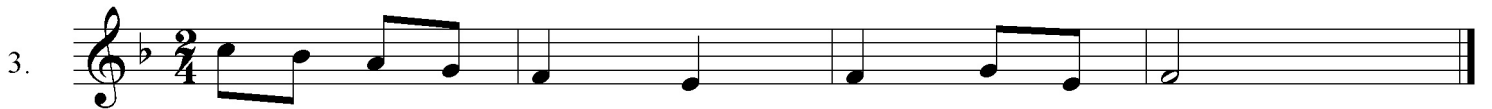
Circle all of the rests in each exercise for the Gray Form.

The FLAT sign (b) lowers the pitch one-half step.

Rules for flats: The flat sign lasts for the whole measure. The barline cancels the flat sign. Be careful!



If there is one flat sign in the KEY SIGNATURE, it means that EVERY B must be played as Bb throughout the song.



Time Signatures:

A time signature at the beginning of the piece provides the musician with certain information:

How many beats there are in each measure

How that beat is broken up (whether it divides equally in two or three)

2 = 2 beats in each measure

4 = the quarter note gets 1 beat

When the time signature is 2, how many beats are in each measure? _____
4

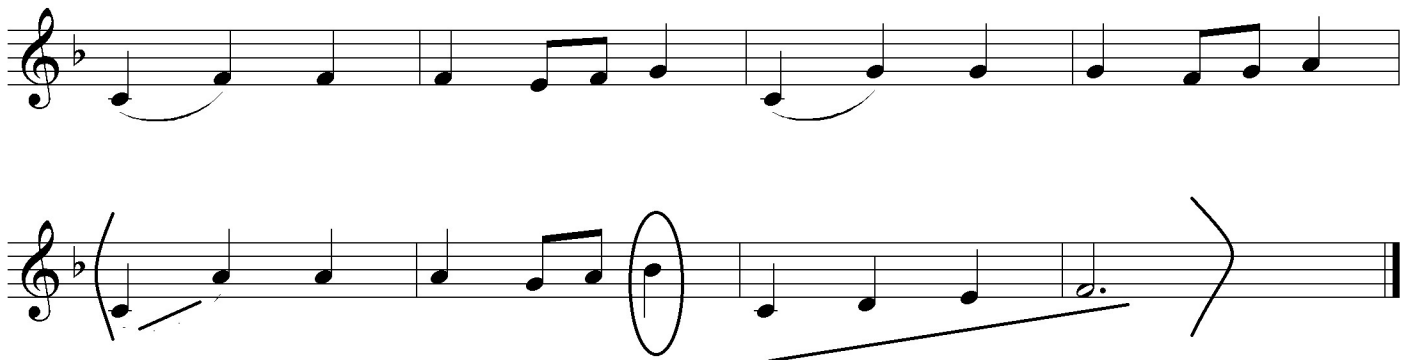
When the time signature is 3, how many beats are in each measure? _____
4

When the time signature is 4, how many beats are in each measure? _____
4

When Love is Kind

The Gray test is the 2nd line of the song.

Irish Folk Song



Congratulations! You have successfully completed the form for the Gray Stripe!

Music Teacher Signature

Date