

BLUE FORM

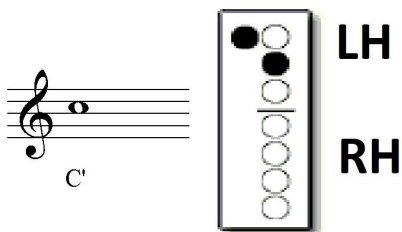
New Notes: C' and D'
Test Piece: Lightly Row

Play the following exercises on new note C'.

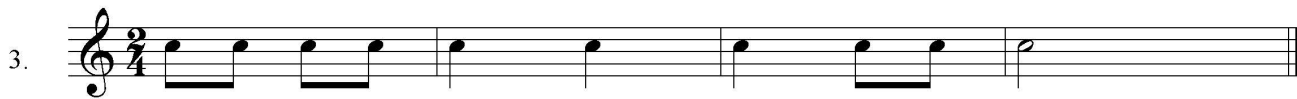
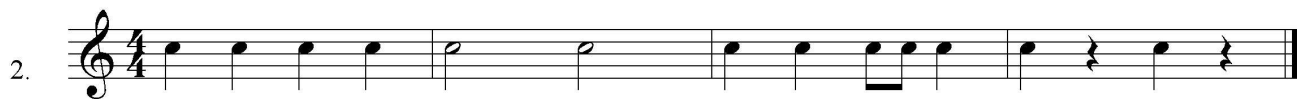
Remember to clap the rhythm first.

Written Work:

Circle all of the rests in each exercise for the Blue Form.

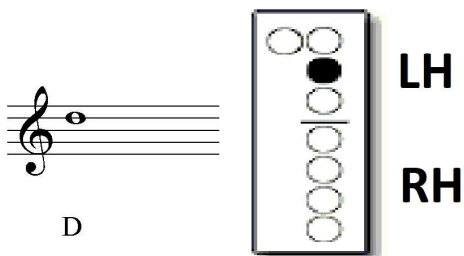


Hint: C' = Cover the thumbhole.

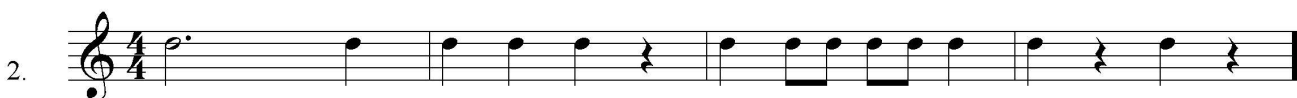


Play the following exercises on new note D'.

Remember to clap the rhythm first.



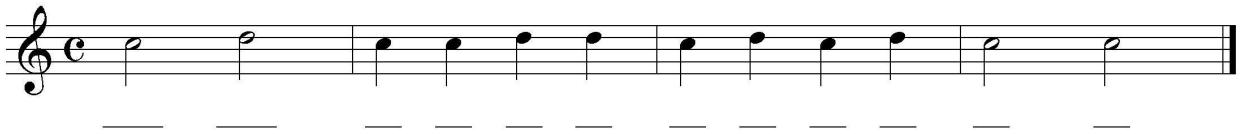
Hint: D' = Don't cover the thumbhole.



Now let's try C' and D' together!

Written Work:

Write the letter name below each note.

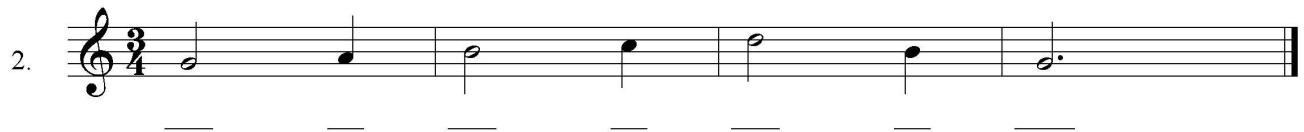
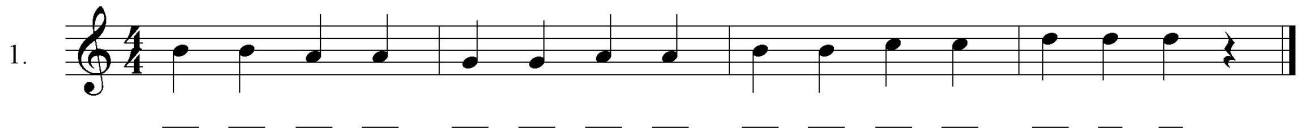
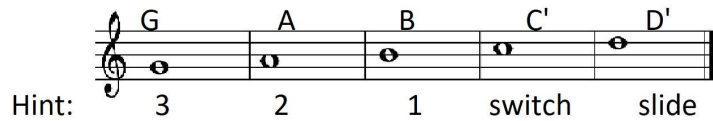


Let's try all 5 notes you have learned so far! (B,A,G, C' and D')

Remember your practice steps AND your written work!

Practice Steps:

1. How many beats per measure?
2. Clap the rhythm.
3. Finger the notes and SAY the note names.
4. Play as written.



Now you are ready to try the Blue Test! Good luck!

LIGHTLY ROW

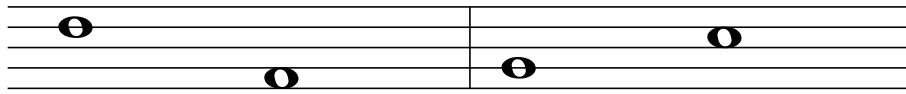
traditional



Continue to the next page and complete the Music theory written work found there. Once you have completed page 3 of the Blue Form you will receive your stripe!

The Staff - High and Low

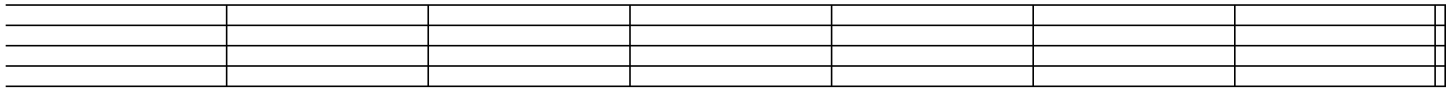
Musical sounds (low or high) are shown by the position of notes on the staff. Notes that are higher on the staff have a higher sound or pitch than those that are lower on the staff.



The first note sounds higher
than the second note.

The first note sounds lower
than the second note.

1. Draw a note on the indicated line or space, then circle the highest note you drew on the staff.



Line 3

Line 4



Space 1

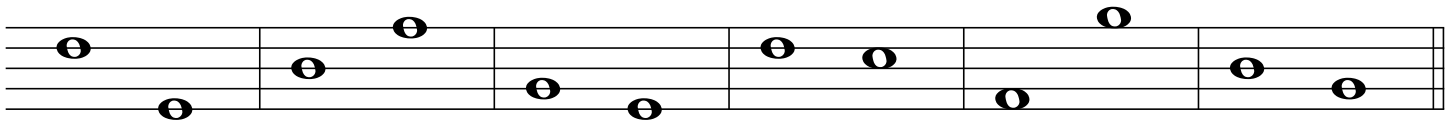
Line 5

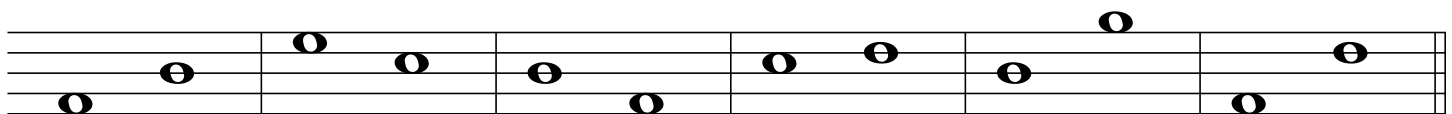
Line 2

Space 3

Line 1

2. Use an arrow to indicate whether the second note of each measure sounds higher  or lower  in pitch than the first note.





3. Use the letters H and L to indicate whether the first note of each measure sounds higher (H) or lower (L) in pitch than the first note.